

WELCOME

Primary 1 Orientation
17 November 2022

Principal's Welcome

- Developments in Primary Education
- Other important points
- School-Home Partnership

Pei Tong Primary School

peitongpri.moe.edu.sg

PEI TONG

About Us | Our People | PTPS Experience | E-Open House 2021 | Parents' Portal | Gallery | Our Partners | MK @ PTPS | Calendar

EVENTS
HIGHLIGHTS
LINKS

HBL INFO SITE

- Download Briefing Slides
- Useful Links For Parents
- "PT Heartbeat" Publications
- Student Learning Space
- Parents Gateway
- Sexuality Education
- Family Members @ School
- 2021 Briefing Slides

CARE RESPECT

Privacy Policy | FAQs | Contact Us | Report Violation | NOMINATE NOW

https://peitongpri.moe.edu.sg/parents-portal/download-briefing-slides

Slides can be downloaded from the school website by December.



MRS NG TEO SOCK HUA
PRINCIPAL



MR YAZEED SAID
VICE PRINCIPAL



MR WINSTON TAN
VICE PRINCIPAL - ADMIN

SCHOOL LEADERS

VISION

EVERY CHILD A PASSIONATE LEARNER,
A RESILIENT AND GRACIOUS CITIZEN

MISSION

NURTURING AND INSPIRING EVERY CHILD TO BE AN ENGAGED LEARNER
WHO IS HOLISTICALLY DEVELOPED, FUTURE-READY AND ANCHORED IN VALUES
IN A CARING ENVIRONMENT

SCHOOL VALUES

CARE
RESPECT
INTEGRITY
RESPONSIBILITY
RESILIENCE
EXCELLENCE

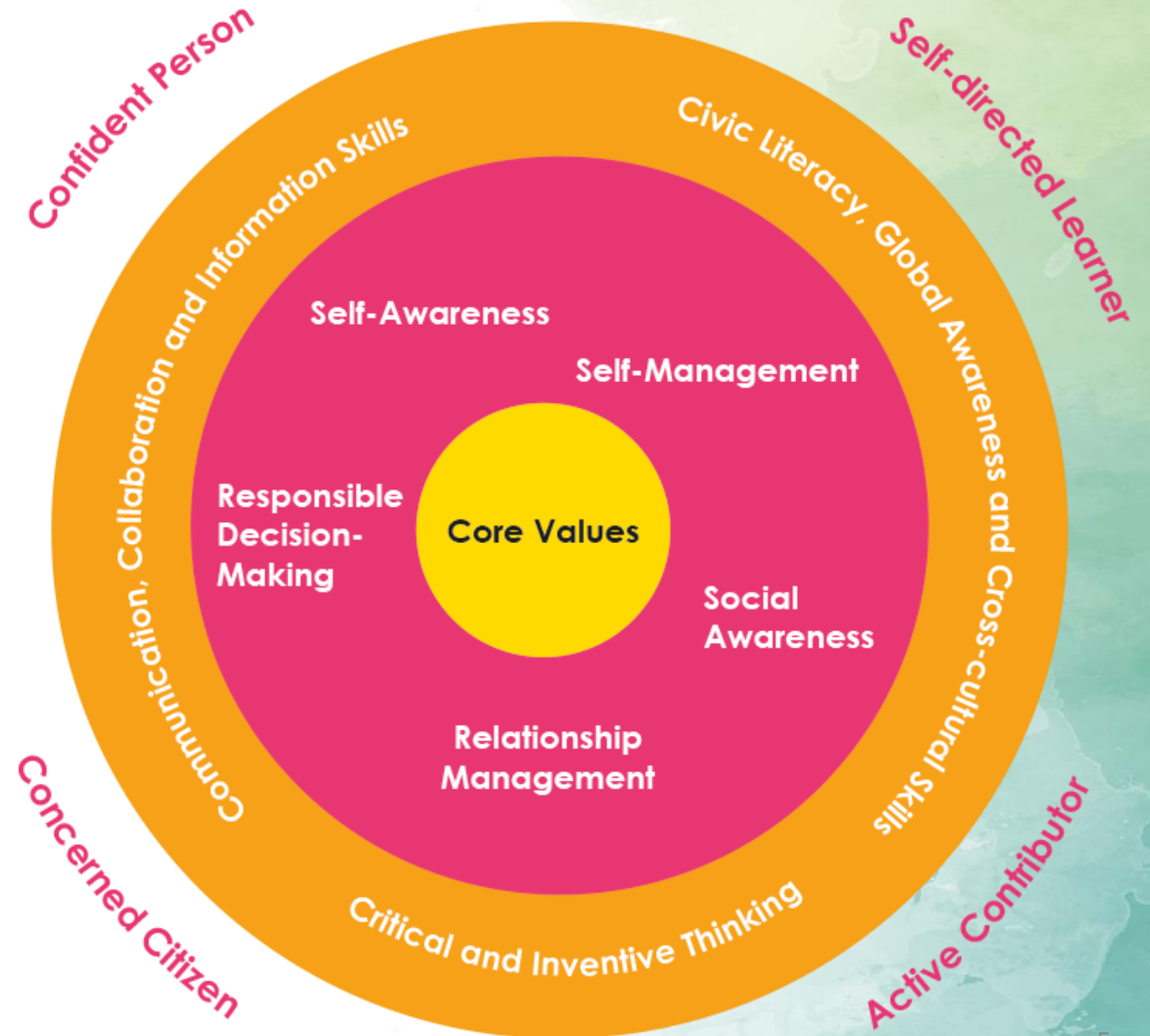
WE WANT OUR CHILDREN TO BE

Confident

Self-directed learners

Active contributors

Concerned citizens



AIMS OF PRIMARY EDUCATION

- Lay a strong foundation
- Nurture well-rounded individuals and passionate lifelong learners
- Prepare the child for the future



DEVELOPMENTS IN PRIMARY EDUCATION

Move away from over-emphasis on academic grades

Reduction of school-based assessments:

- Since 2021, all primary schools have removed weighted assessments in P1 and P2, including the P2 end-of-year examination.
- This is because we recognise the importance of encouraging students at a young age, to focus on growth and mastery, instead of grades and performance.
- By 2023, mid-year examinations will be removed for P3 and P6 in all primary schools, to give out students more time to explore new subjects, and build confidence.

DEVELOPMENTS IN PRIMARY EDUCATION

Changes in PSLE Scoring

Review of PSLE scoring: (Parent's Briefing)

- From 2021 onwards, the PSLE will be scored with wider bands and the scores reflect the student's individual performance and not his performance relative to his peers.

DEVELOPMENTS IN PRIMARY EDUCATION

Changes to the PSLE Scoring & S1 Posting System

From T-score to wider scoring bands

REFLECTS A STUDENT'S INDIVIDUAL LEVEL OF ACHIEVEMENT

- Unlike the current T-score, students' AL for each subject will reflect their level of achievement, rather than how they have performed relative to their peers.

AL	1	2	3	4	5	6	7	8
Raw Mark Range	≥ 90	85-89	80-84	75-79	65-74	45-64	20-44	< 20


Foundation Level AL Reflected on Result Slip	Foundation Raw Mark Range	Equivalent Standard Subject AL	Standard Raw Mark Range
A	75 – 100	6	45-64
B	30 – 74	7	20-44
C	< 30	8	<20

DEVELOPMENTS IN PRIMARY EDUCATION

Changes to the PSLE Scoring & S1 Posting System

Calculating PSLE Score

- The PSLE Score replaces the T-score aggregate.
- The AL score assigned to each subject is based on the raw marks that the student has scored.
The PSLE score is obtained by adding the ALs of four subjects.
- The PSLE Score ranges from 4 to 32, with 4 being the best possible score.



ENGLISH LANGUAGE	AL3
MOTHER TONGUE LANGUAGE	AL2
MATHEMATICS	AL1
SCIENCE	AL2
PSLE SCORE: 8	

DEVELOPMENTS IN PRIMARY EDUCATION

Application to Asian Language / Foreign Language (Mother Tongue In Lieu)

Example:

Arabic, Burmese, Thai, French, German or Japanese)

- Total AL Score is based on 4 subjects
(EL, MA, SC, MT in lieu)
- **Score computed for MT in lieu: AL 6 - 8**
- Implication for Sec 1 Posting

Parents who are considering this, please contact the school if you would like to find out more.

Points to note

Application to take Non-Mother Tongue Language

Example:

Non-Chinese taking Chinese Language

Non-Malay taking Malay Language

- Ensure child is able to cope
- Presence of environment for child's learning
- Issue of seeking exemption when child cannot cope
(without other reasons, not a consideration)

DEVELOPMENTS IN PRIMARY EDUCATION

Opportunities for students with Special Education Needs

- Children with mild SEN can benefit from more help in mainstream schools. Support for them starts in their primary years and extends to tertiary education and beyond.
(Work with the school if your child has needs.
Seek parent's understanding; clarify concerns with teachers;
diverse spread of students in every class)
- Specialised support are provided in mainstream primary schools for students with Dyslexia, Autism Spectrum Disorder (ASD) and Attention Deficit/Hyperactivity Disorder (ADHD)
- You may initiate to speak to our SENCO to find out more.

OTHER IMPORTANT POINTS

COMMUNICATION CHANNELS

1. **Parents Gateway**
2. **School Website** (ptps@moe.edu.sg)
3. **Email (for all teachers)**
4. **Leave a message to General Office Staff**
5. **PTPS Student Handbook**
6. **Class Dojo**

OTHER IMPORTANT POINTS

ABSENCE FROM SCHOOL



Submit an MC or Parent's letter when absent

MC – for health related reason

Letter – for non health related reason

Call the school General Office (Tel: 6777 5458) by 8am if your child/ward is absent.

Sign out at the General Office if your child needs to leave early during school hours. [Early Dismissal Record Book]

Note: Do not leave for holidays during term time

SCHOOL-HOME PARTNERSHIP

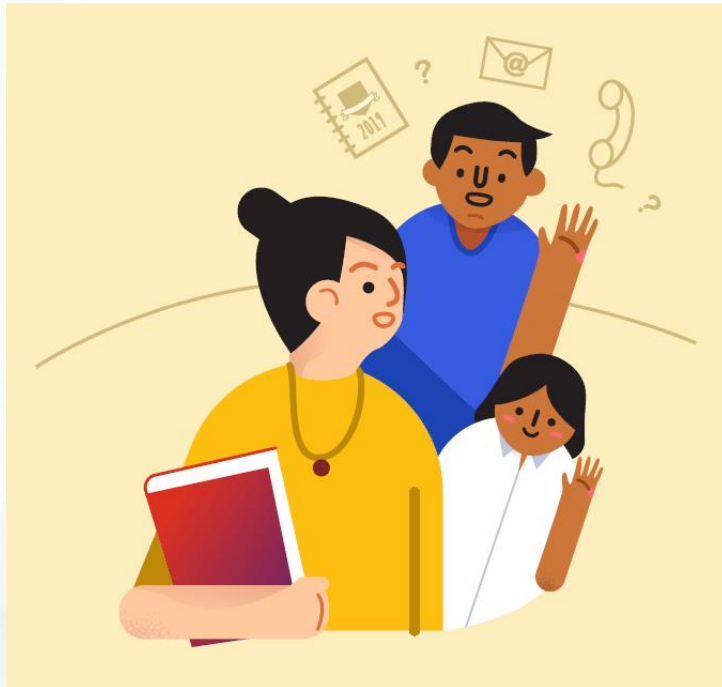
Our children do best when schools and parents work hand in hand to support them.

- Work with the teachers to help your child respect differences and resolve disagreements amicably.
- Work with the school to verify the facts in any incident before taking action to ensure a fair, objective outcome for all parties.
- Check the teachers' preferred mode of communication – they are not required to share their mobile numbers.
- Understand that teachers may not be able to respond to your queries immediately.

SCHOOL-HOME PARTNERSHIP

Our children do best when schools and parents work hand in hand to support them.

Communicating with your child's teacher



Join the Parent Support Group (PSG)!

- The PSG consists of a group of dedicated parents who partner the school to support fellow parents in nurturing their children.
- It is the platform for parents to network, share, learn and support each other in this parenting journey.



MR TEO YEP HAO
CHAIRPERSON



MDM CHRISTY YEW
VICE CHAIRPERSON



MDM ABIGAIL NG
SECRETARY



MR RUAN ZHI LONG
COMMITTEE MEMBER



MR SAM SIEW
COMMITTEE MEMBER



MDM VIVIAN GUO
COMMITTEE MEMBER



MDM LIANG MAY
COMMITTEE MEMBER



DR PINKY CHAUDHARY
COMMITTEE MEMBER



MDM JAIME TAN
COMMITTEE MEMBER



MDM JENNY ANG
COMMITTEE MEMBER



MDM JASMINE THIEN
COMMITTEE MEMBER



MR XU CONG YUAN
COMMITTEE MEMBER



MR WONG POH YUNG JERON
COMMITTEE MEMBER

PSG-PARENT SUPPORT GROUP

Join PSG

psgptps@gmail.com





Thank You